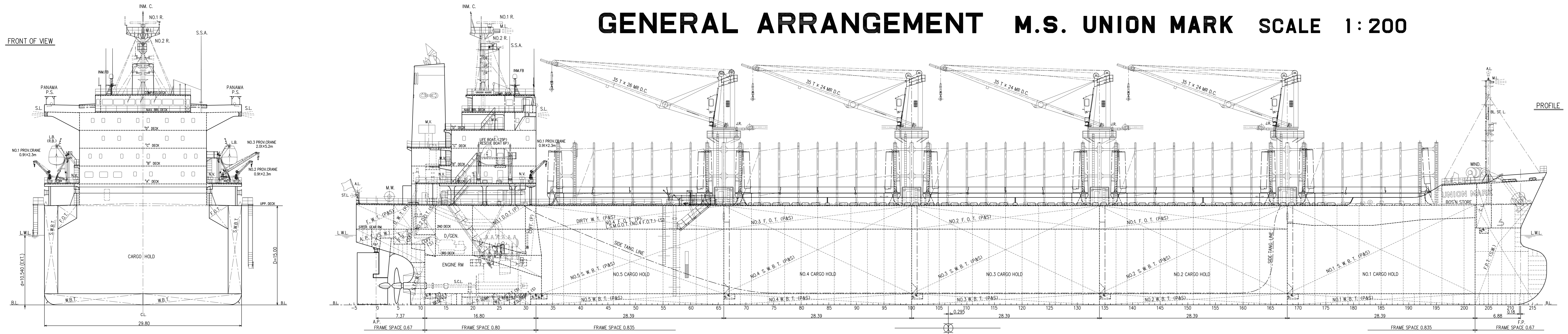


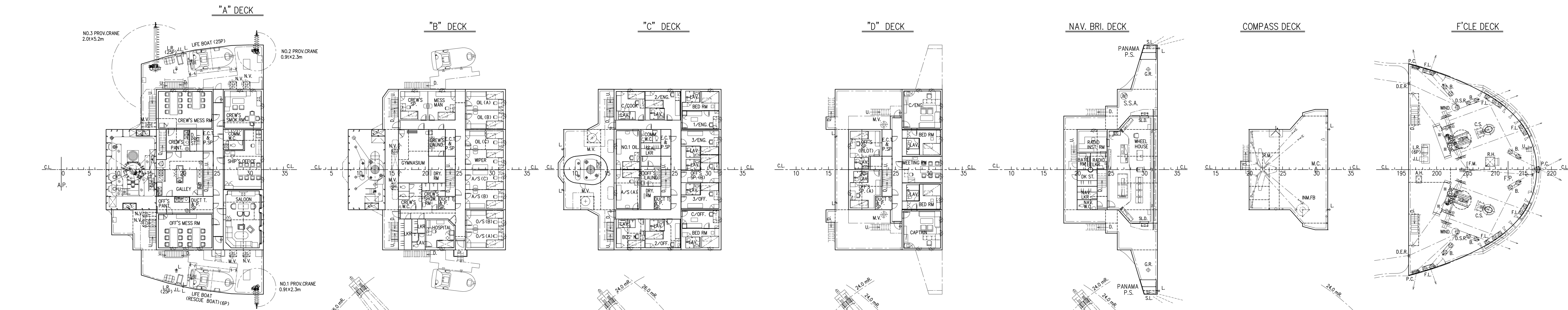
GENERAL ARRANGEMENT M.S. UNION MARK SCALE 1:200

HISTORY

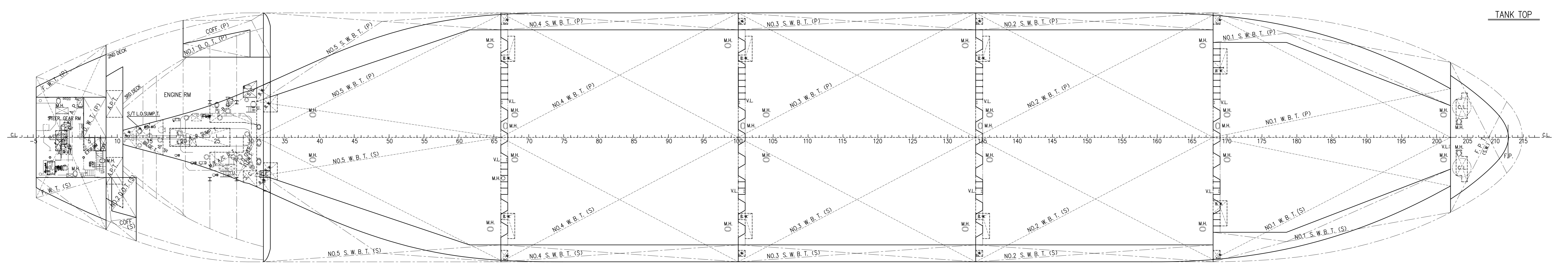
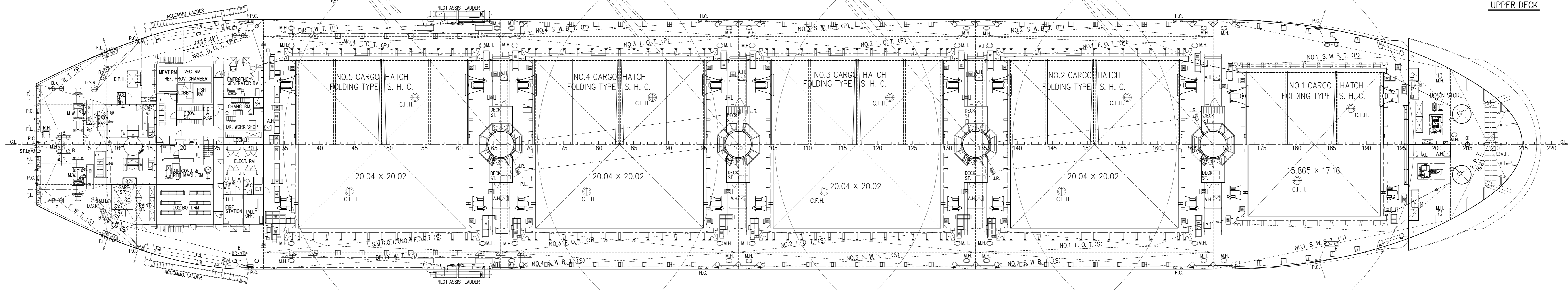
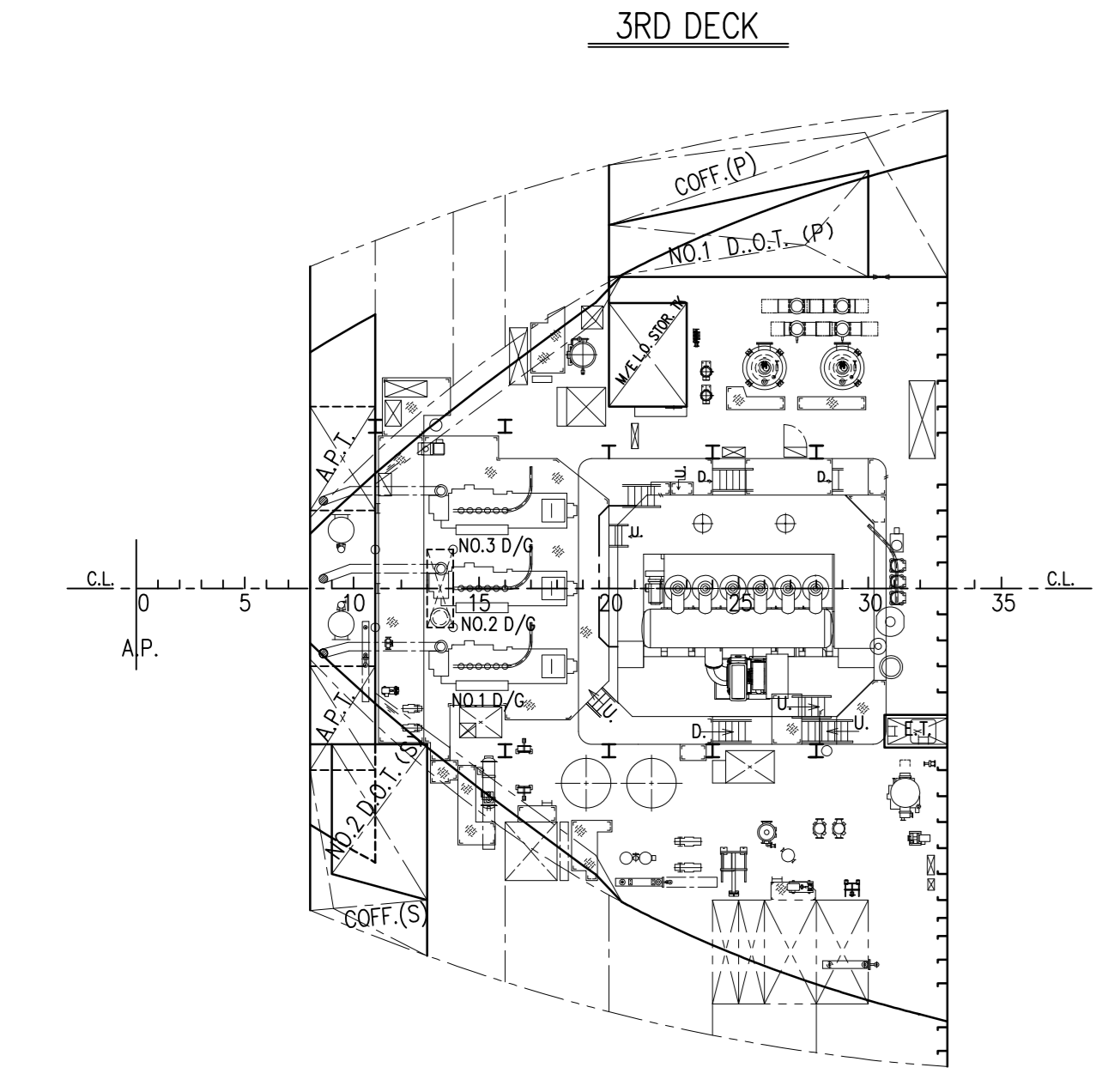
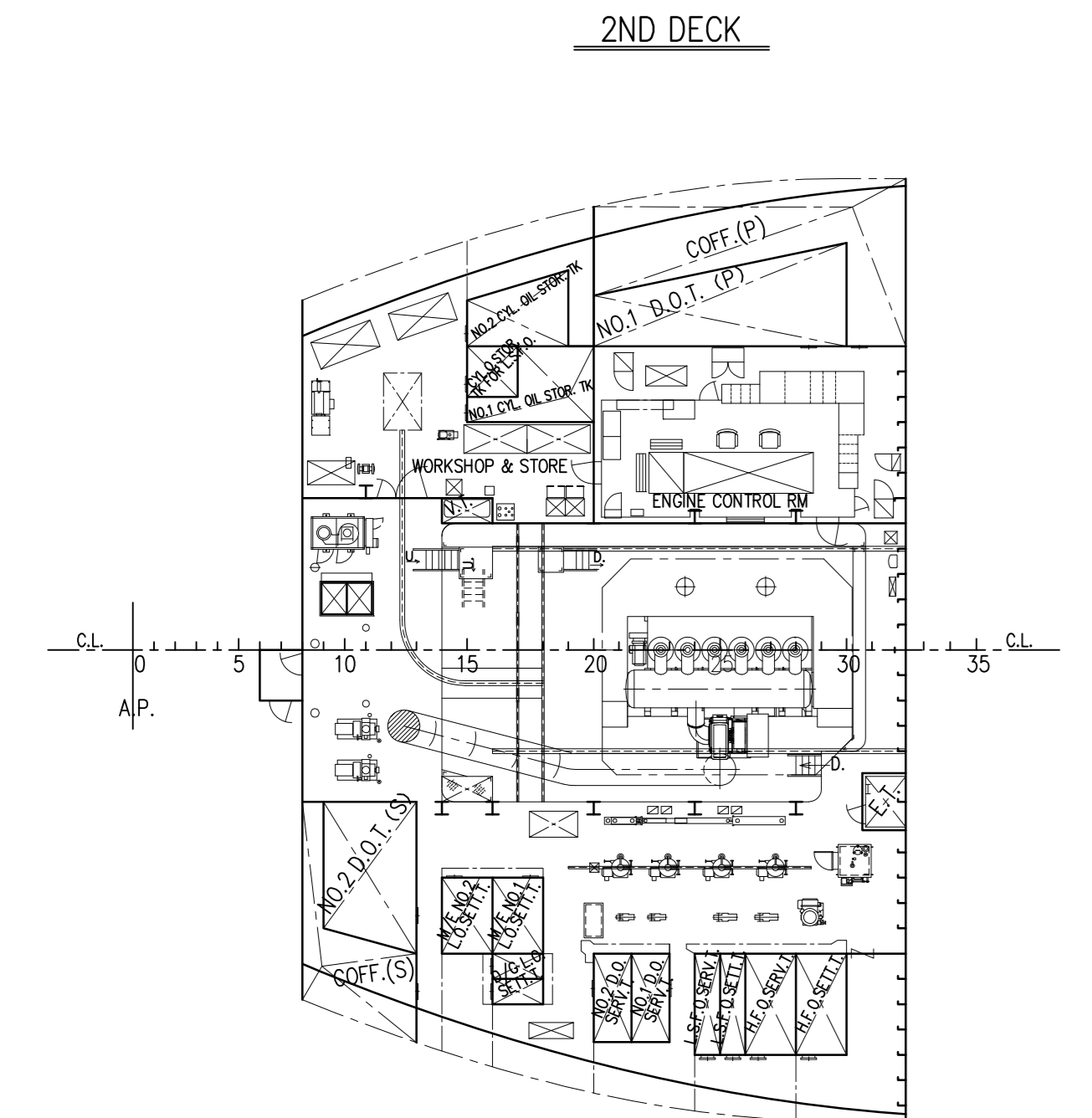
DRAWN BY THIS WORKS.
DATE: May 26, 2016



PRINCIPAL PARTICULARS	
LENGTH (O.A.)	179.97 m
LENGTH (S.P.)	173.00 m
BREADTH (M.L.D.)	29.80 m
DEPTH (M.L.D.)	15.00 m
DRAUGHT (at SUMMER EXTREME)	10.540 m
DEADWEIGHT (at ASSIGNED DRAUGHT)	37,644 MT
GROSS TONNAGE (I.C.T.M.)	23,250
NET TONNAGE (I.C.T.M.)	12,101
MAIN ENGINE	MAKITA-MITSUBISHI MAN B & W 6S50ME-CB2 x 1 set
MAXIMUM CONTINUOUS RATING	6,780 kW x 108 min*
NORMAL OUTPUT RATING	5,215 kW x 99.0 min* (76.9% M.C.R.)
HOLD CAPACITY : (GRAIN)	46,994.86 m ³
(BALE)	45,236.33 m ³
SPEED (d = 10.00 m (moulded) at NOR. Output of M/E 15 % S.M.)	14.5 knots
TRIAL MAX.	16.033 knots
CLASS	NIPPON KAI KYOKAI (NK)
CLASSIFICATION CHARACTERS	NS * (BULK CARRIER MODIFIED, BC-XI, GRAB, EO C/D, PSPC-WBT) (IWS)
(BITS) / MNS *	
DESCRIPTIVE NOTE	STRENGTHENED FOR HEAVY CARGO LOADING WHERE HOLD NOS. 2 & 4 MAY BE EMPTY/ DOUBLE HULL CONSTRUCTION APPLIED TO ALL CARGO HOLDS
INSTALLATIONS CHARACTERS	CHG. MPP, LSA, RCF, M3, AFS



COMPLEMENT			
DECK PART	ENGINE PART	BUSINESS PART	
CAPTAIN	1 CHIEF ENGINEER	1	
CHIEF OFFICER	1 1ST ENGINEER	1	
2ND OFFICER	1 2ND ENGINEER	1	
3RD OFFICER	1 3RD ENGINEER	1	
BOATSWAN	1 NO.1 OILER	1	CHIEF COOK
ABLE SEAMAN	3 OILER	3	
ORD. SEAMAN	2 WIPER	1	MESS MAN
TOTAL NUMBER OF CREW		8	P.
OFFICER'S SPARE (JUNIOR OFFICER CLASS)		2	P.
CREW'S SPARE (RATING CREW CLASS)		1	P.
OFFICER'S SPARE (PILOT)		1	P.
GRAND TOTAL		25	P.



CAUTION
THIS DRAWING OR DOCUMENT IS THE PROPERTY OF MARU SHIPBUILDING CO., LTD. REPRODUCTION, COPYING, UTILIZATION FOR PURPOSES OTHER THAN AGREED, DISCLOSURE TO A THIRD PARTY, ARE STRICTLY SUBJECT TO PRIOR WRITTEN AGREEMENT BY MARU SHIPBUILDING CO., LTD.

FINISHED PLAN			
DESIGNED	BASIC DESIGN GROUP		
APPROVED	BASIC DESIGN TEAM		
CHECKED	<i>S. Fujisawa</i>		
DRAWN	<i>S. Fujisawa</i>		
SHIP NO.	CLASS	SCALE	DWG. NO.
S-H617	NK	1/200	C-0200

M.S. "UNION MARK"
IMO 9775153
GENERAL ARRANGEMENT