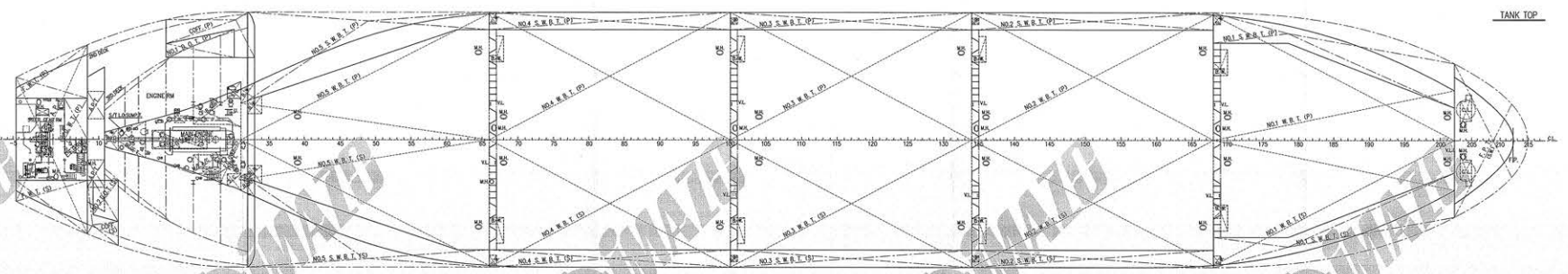
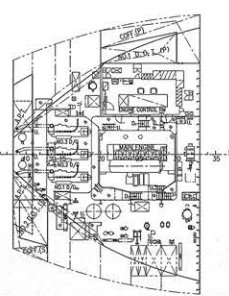
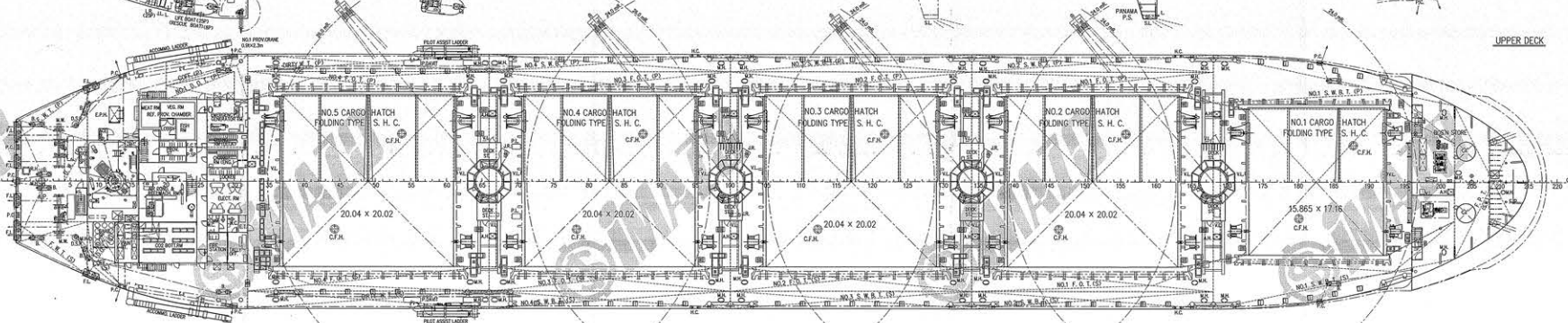
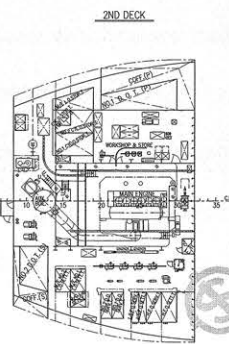
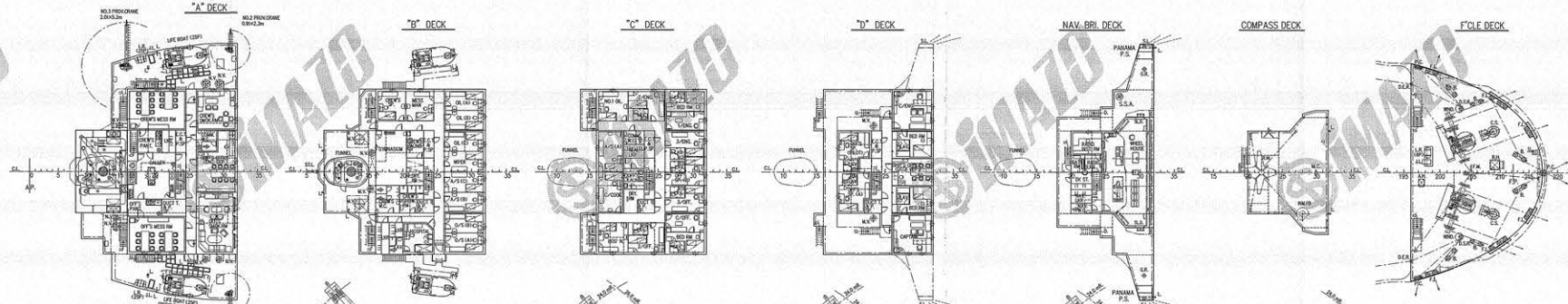
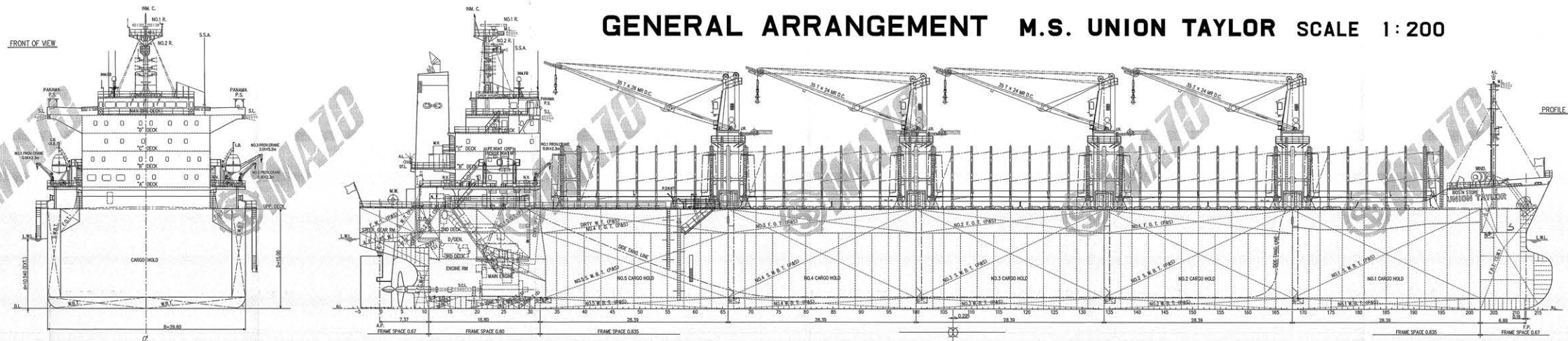


# GENERAL ARRANGEMENT M.S. UNION TAYLOR SCALE 1:200

HISTORY

DRAWN BY THIS WORKS.  
DATE: September 11, 2014



PRINCIPAL PARTICULARS	
LENGTH (L.O.A.)	170.97 m
LENGTH (L.B.P.)	173.00 m
BREADTH (M.B.D.)	29.80 m
DEPTH (M.B.D.)	15.00 m
DRAUGHT (at SUMMER EXTREME)	10.540 m
SEACRIGHT (at AVERAGE DRAUGHT)	37.683 MT
GROSS TONNAGE (L.O.A.M.)	23,226
NET TONNAGE (L.O.A.M.)	12,101
MAIN ENGINE	
MANITOWOC-MAN B & W 6548ME-88.3 x 1 set	
MAXIMUM CONTINUOUS RATING	4,620 kW @ 2100 rpm
NOMINAL OUTPUT RATING	5,720 kW x 104 rpm (4,800 M.C.R.)
HOLD CAPACITY (C.F.A.)	
NO. 1 CARGO HOLD	46,804.06 m³
NO. 2 CARGO HOLD	45,230.33 m³
SPEED	
DESIGN SPEED (L.O.A. 100% (nominal) at NO. 2 Output of M.E. 15.5 S.M.)	14.6 knots
TRIAL MAX.	15.903 knots
CLASS	
NIPPON KAI KYOKAI (NK)	
CLASSIFICATION CHARACTERS	
NS + BULK CARRIER MODIFIED, BC-35, GRAB, EG C, DG, P, PC-C, HB7 (NS)	
CERTS / AGENCIES	
DESCRIPTION NOTE	
STRENGTHENED FOR HEAVY CARGO LOADING WHERE HOLD NOS. 2 & 4 MAY BE EMPTY	
DOUBLE HULL CONSTRUCTION APPLIED TO ALL CARGO HOLDS	
INSTALLATIONS CHARACTERS	
CHS, MPP, LSA, ROF, MO, RYS	

COMPLEMENT		
DECK PART	ENGINE PART	BUSINESS PART
CAPTAIN	1	1
CHIEF OFFICER	1	1
2ND OFFICER	1	1
3RD OFFICER	1	1
BOATSWAIN	1	1
ABLE SEAMAN	3	3
CHIEF COOK	1	1
MESS MAN	1	1
TOTAL NUMBER OF OFFICER		8 P. 1
TOTAL NUMBER OF CREW		13 P.
OFFICER'S SPACE (LUMBER OFFICER CLASS)		2 P.
CREW'S SPACE (TRAINING CREW CLASS)		1 P.
OFFICER'S SPACE (PILOT)		1 P.
GRAND TOTAL		25 P.

SERIAL NO. B-02

CAUTION  
THIS DRAWING OR DOCUMENT IS THE PROPERTY OF NIPPON SHIPBUILDING CO., LTD.  
REPRODUCTION, COPYING, OR DISSEMINATION FOR PURPOSES OTHER THAN AGREED, DISCLOSE TO A THIRD PARTY, ARE EXPRESSLY SUBJECT TO PRIOR WRITTEN AGREEMENT BY NIPPON SHIPBUILDING CO., LTD.



FINISHED PLAN

GROUP: BASIC DESIGN TEAM  
APPROVED: [Signature]  
CHECKED: [Signature]  
DRAWN: [Signature]

M.S. "UNION TAYLOR"  
NO 999944  
GENERAL ARRANGEMENT

SCALE: 1/200  
CLASS: NK  
NO. S: S-H609  
NO. M: NK  
NO. C: C-0200  
DATE: September 11, 2014