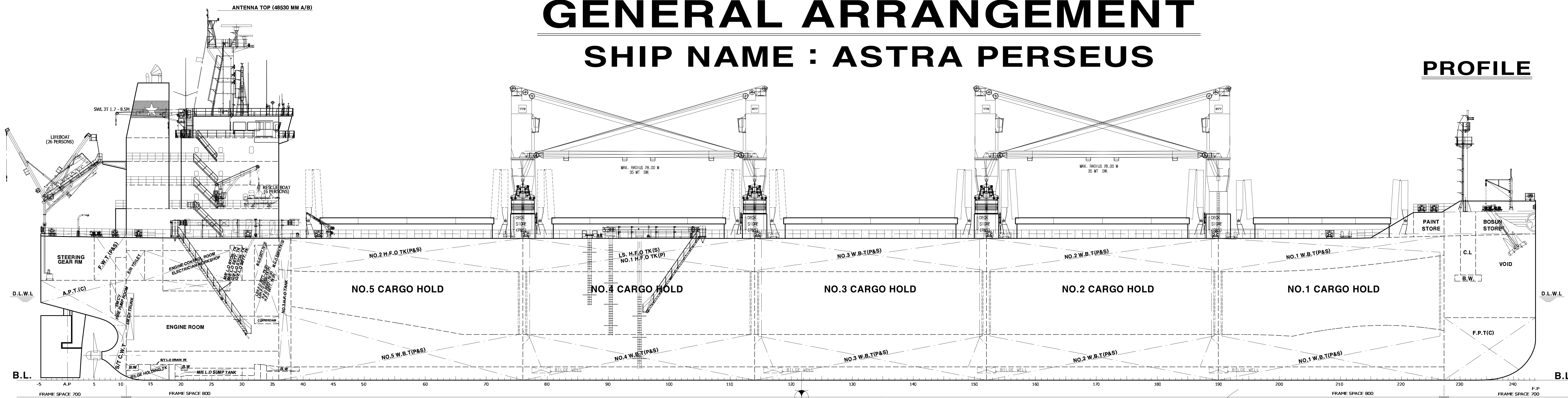
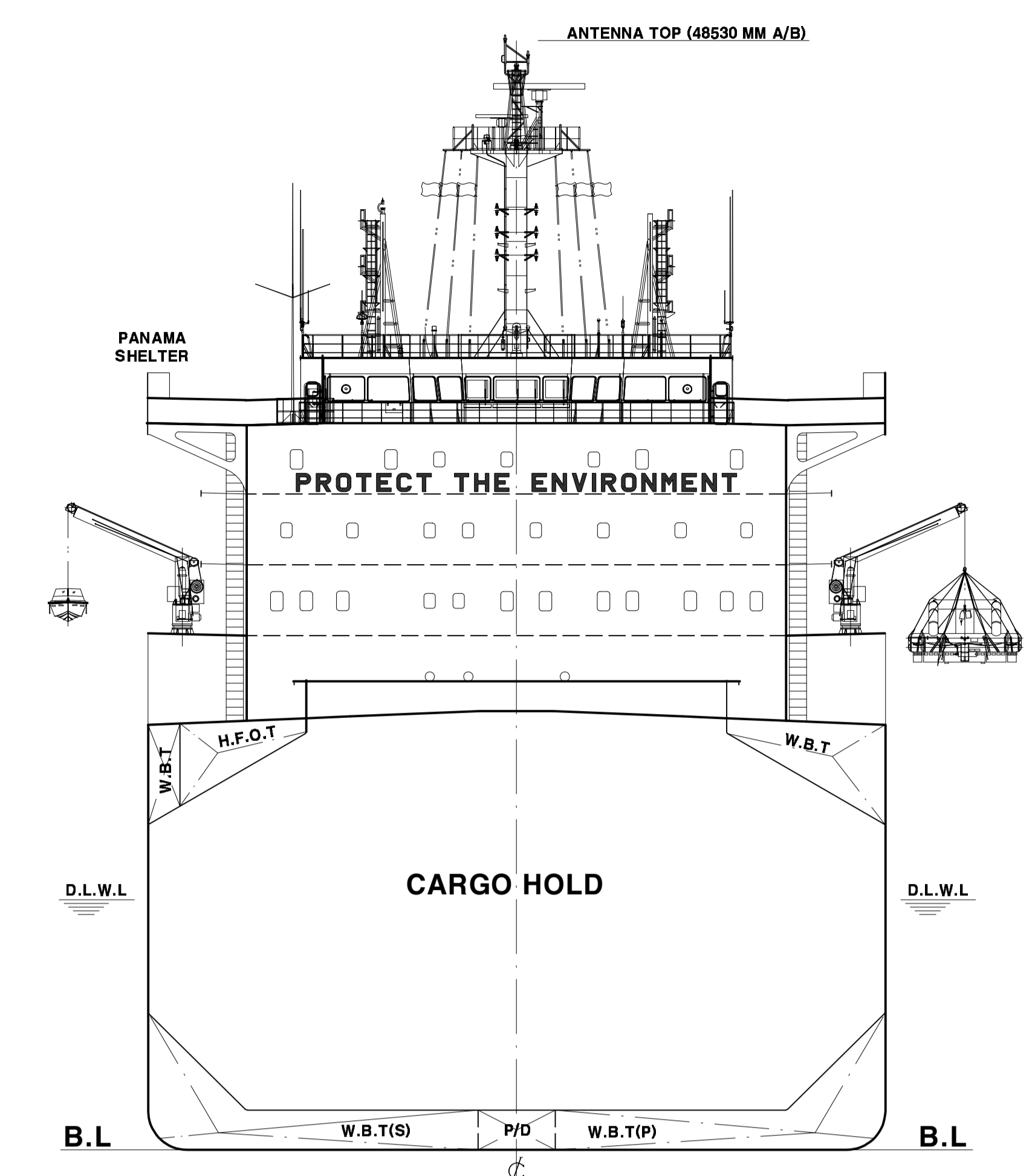


GENERAL ARRANGEMENT

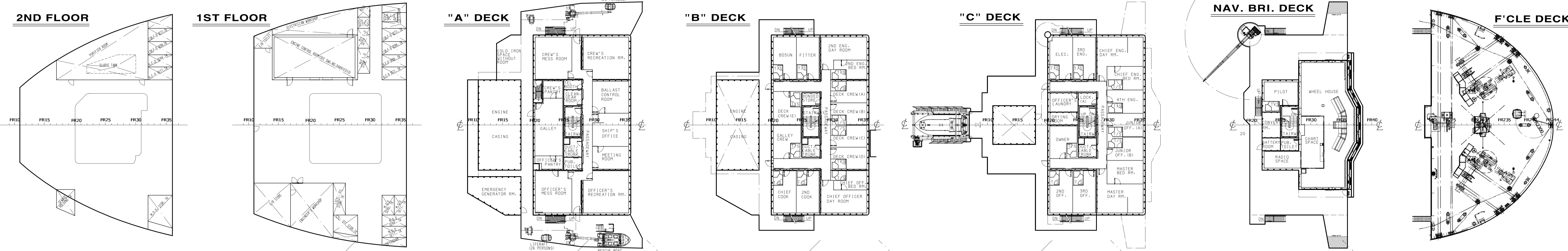
SHIP NAME : ASTRA PERSEUS



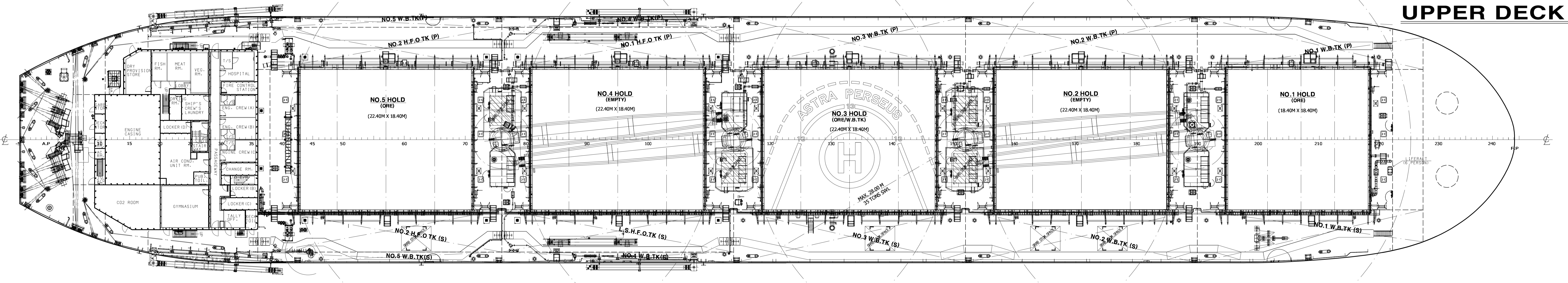
PROFILE



MIDSHIP SECTION



UPPER DECK



TOP DECK

PLAN HISTORY					
DATE	REV. NO.	DESCRIPTION	DWG	CHKD	APPD
2012.08.28.	1	PREPARED BY BASIC DESIGN GROUP OF DSEC	J.Y. KIM	G.H. LIM	J.S. PARK
2012.08.31.	2	FOR CONSTRUCTION			
2012.08.31.	3	ISSUED AS FINISHED PLAN(Y1002)			

PRINCIPAL DIMENSIONS	
LENGTH O. A.	196.00 M
LENGTH B. P.	192.50 M
BREADTH MLD	32.26 M
DEPTH MLD	18.60 M
DRAFT DESIGN	11.10 M
DRAFT SCANT.	13.00 M
DEADWEIGHT	58584.5 TON
GROSS TONNAGE	34837
NET TONNAGE	19536

Service speed at the moulded scantling draft of 13.00 m shall be 14.25 knots at NCR power of M/E with 15% S.M.

MAIN ENGINE
 TYPE : DOOSAN MAN B&W 6S50MC-C(MK8.1) x 1 set
 MCR : 9,960 KW x 127.0 RPM
 NCR : 8,964 KW x 122.6 RPM

CLASSIFICATION
 +100 A1 bulk carrier, CSR, BC-A, (holds 2 and 4 may be empty), GRB(25), ESP, ShipRight(CM, ACS(B)), LI, *TWS, EP(B, Bt, I, P), +LMC, UMS, Descriptive notes : Part Higher Tensile Steel, ShipRight(BWMP(S+F, T), SER5, SCM)

THIS DRAWING OR DOCUMENT IS THE PROPERTY OF DSEC CO., LTD. AND MUST NOT BE PARTIALLY OR WHOLLY COPIED OR USED FOR ANY OTHER PURPOSE WITHOUT PRIOR WRITTEN PERMISSION OF DSEC.					
IMO NO.	9611814				
PROJ. NO.	Y002	PROJECT	R&K 59,000 DWT BULK CARRIER		
APPD BY	DSEC G/S	DSEC G/S	TITLE		
CHKD BY	S.J. LEE	J.S. PARK	SHIP NAME : ASTRA PERSEUS		
DNV BY	K.W. PARK	G.H. LIM	GENERAL ARRANGEMENT		
DEPT	BASIC DESIGN GROUP		DATE	2012-08-31	SCALE
DWG. NO.	1/200	DWG. NO.	DA1017029	REV. NO.	1