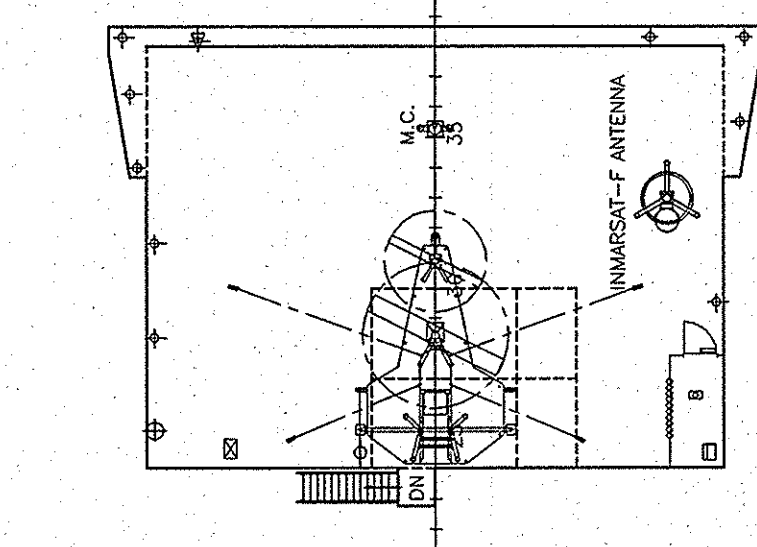


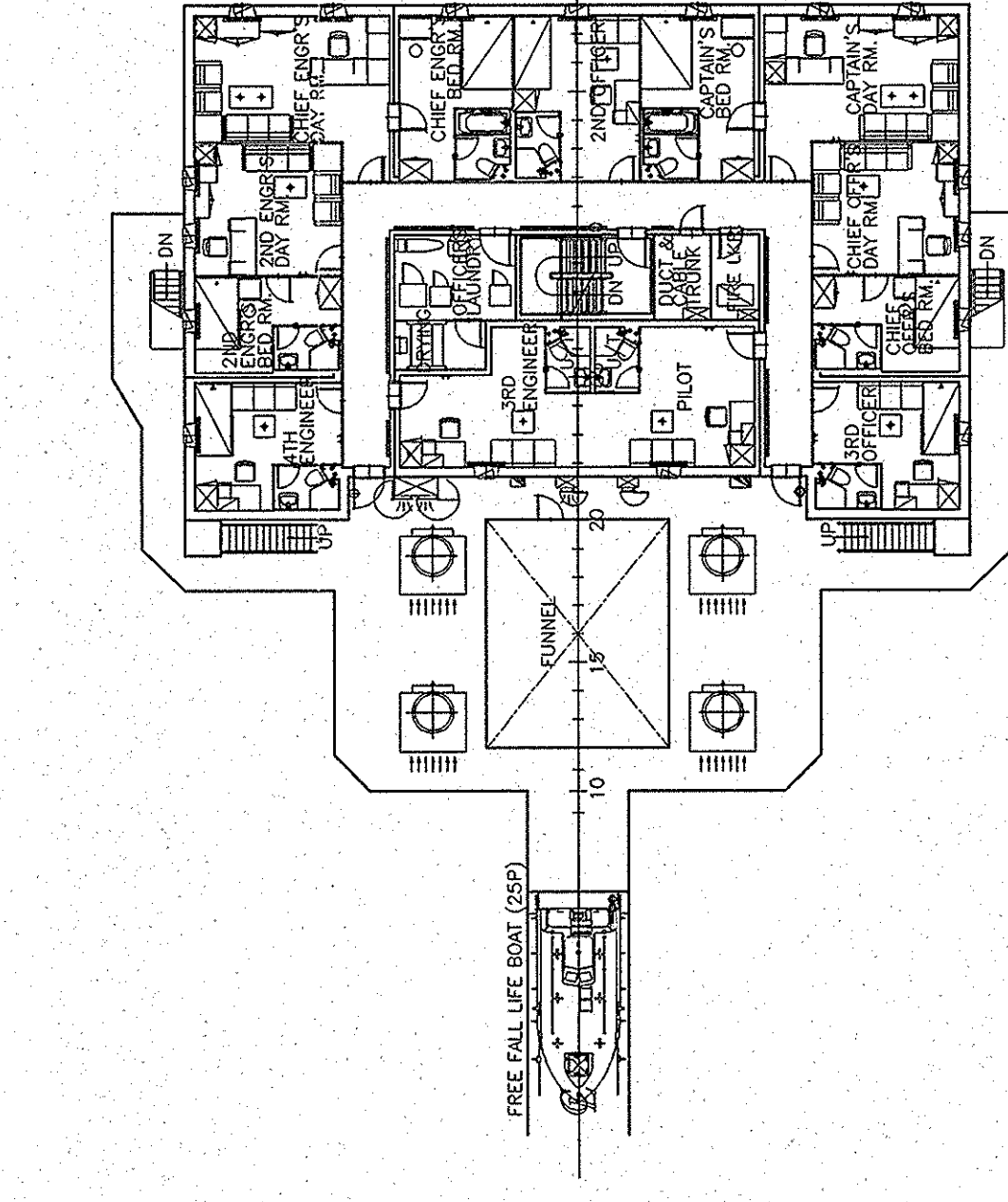
GENERAL ARRANGEMENT

PLAN HISTORY

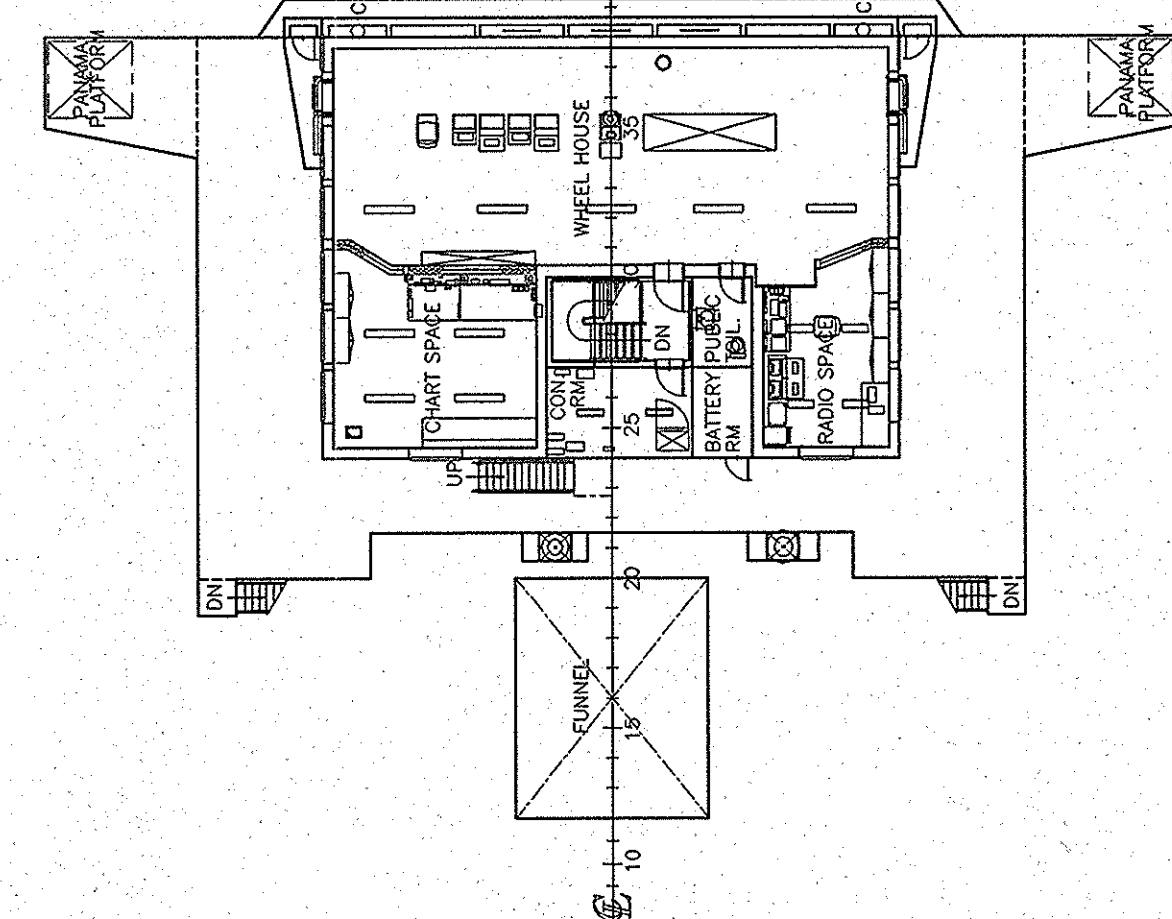
DATE	REV.	DESCRIPTION
2011.01.03	A	DRAWN BY BASIC DESIGN DEPARTMENT



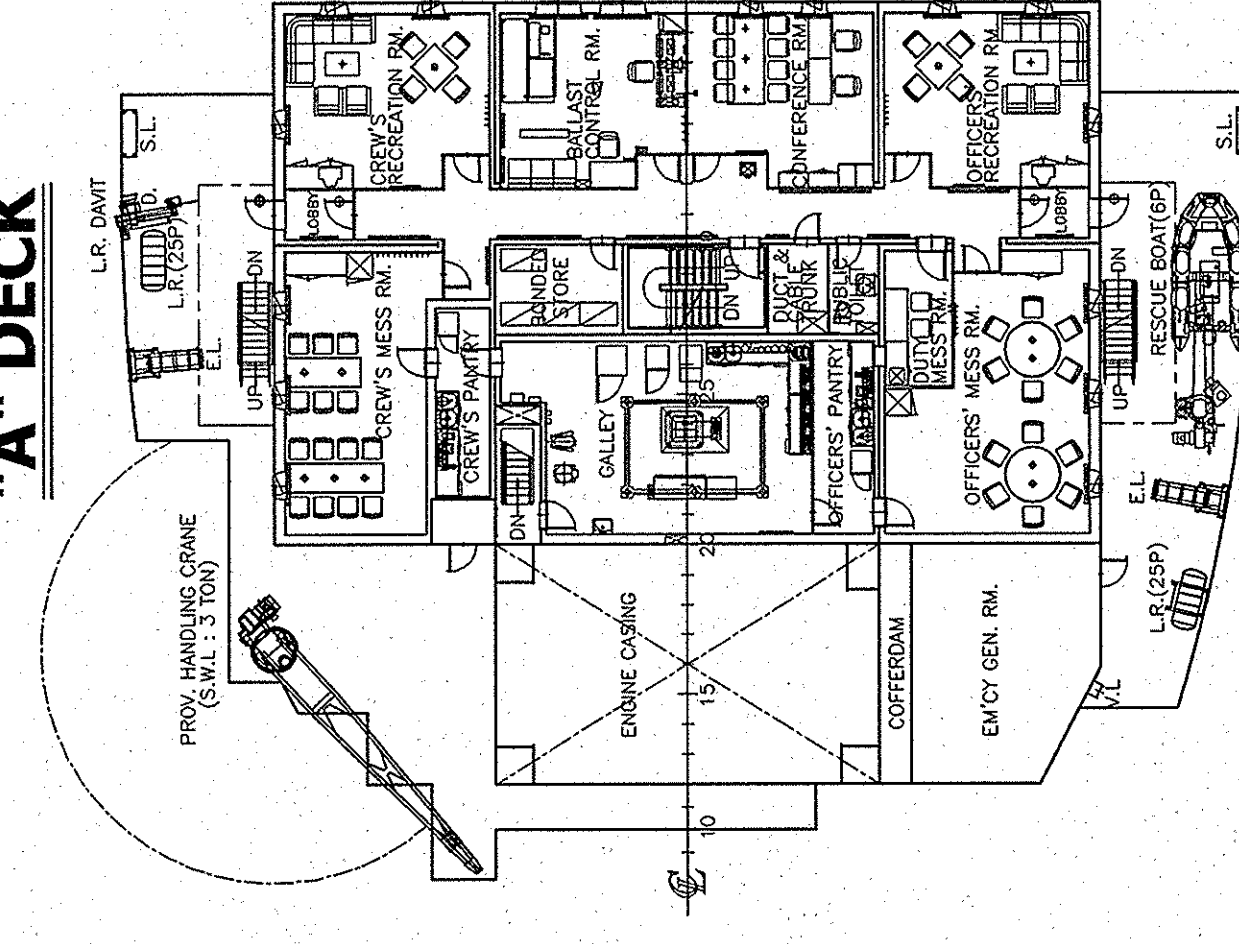
'C' DECK



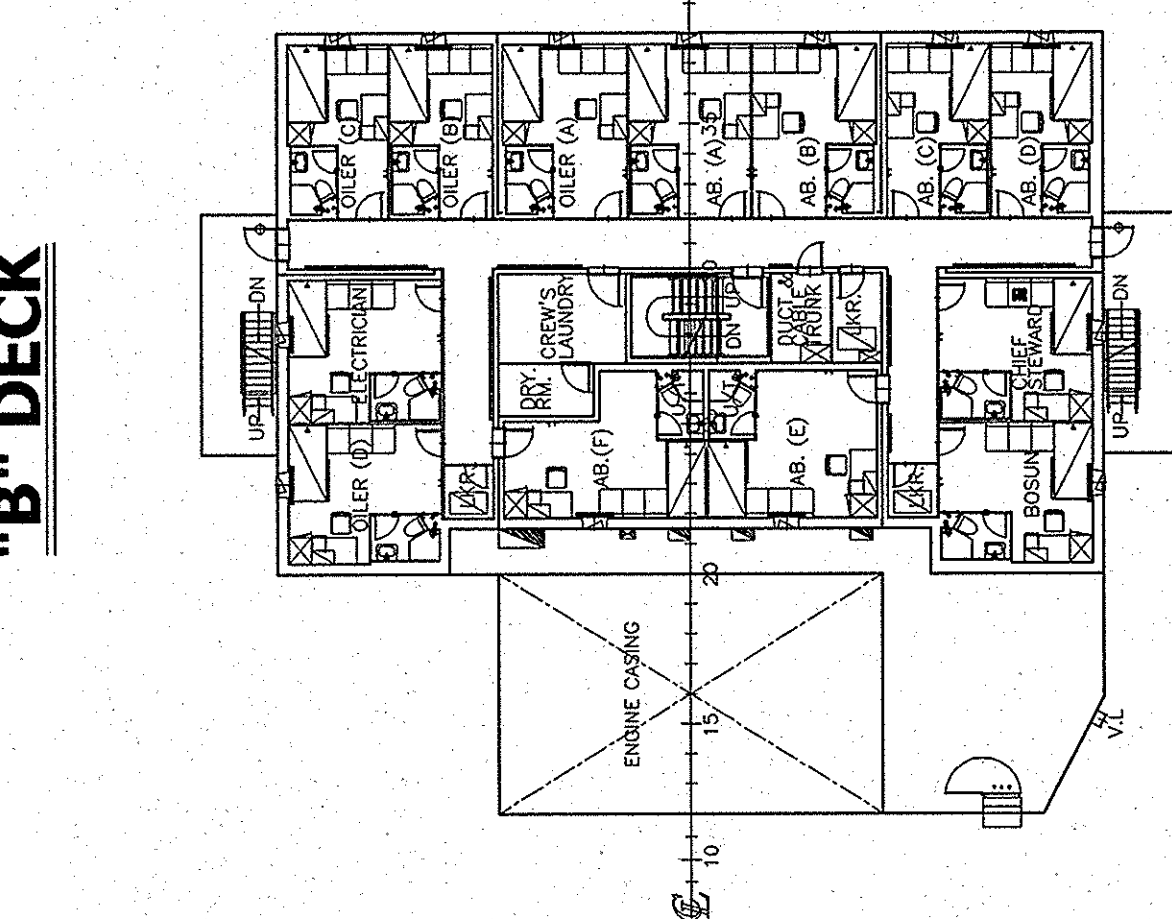
NAVI. BRI. DECK



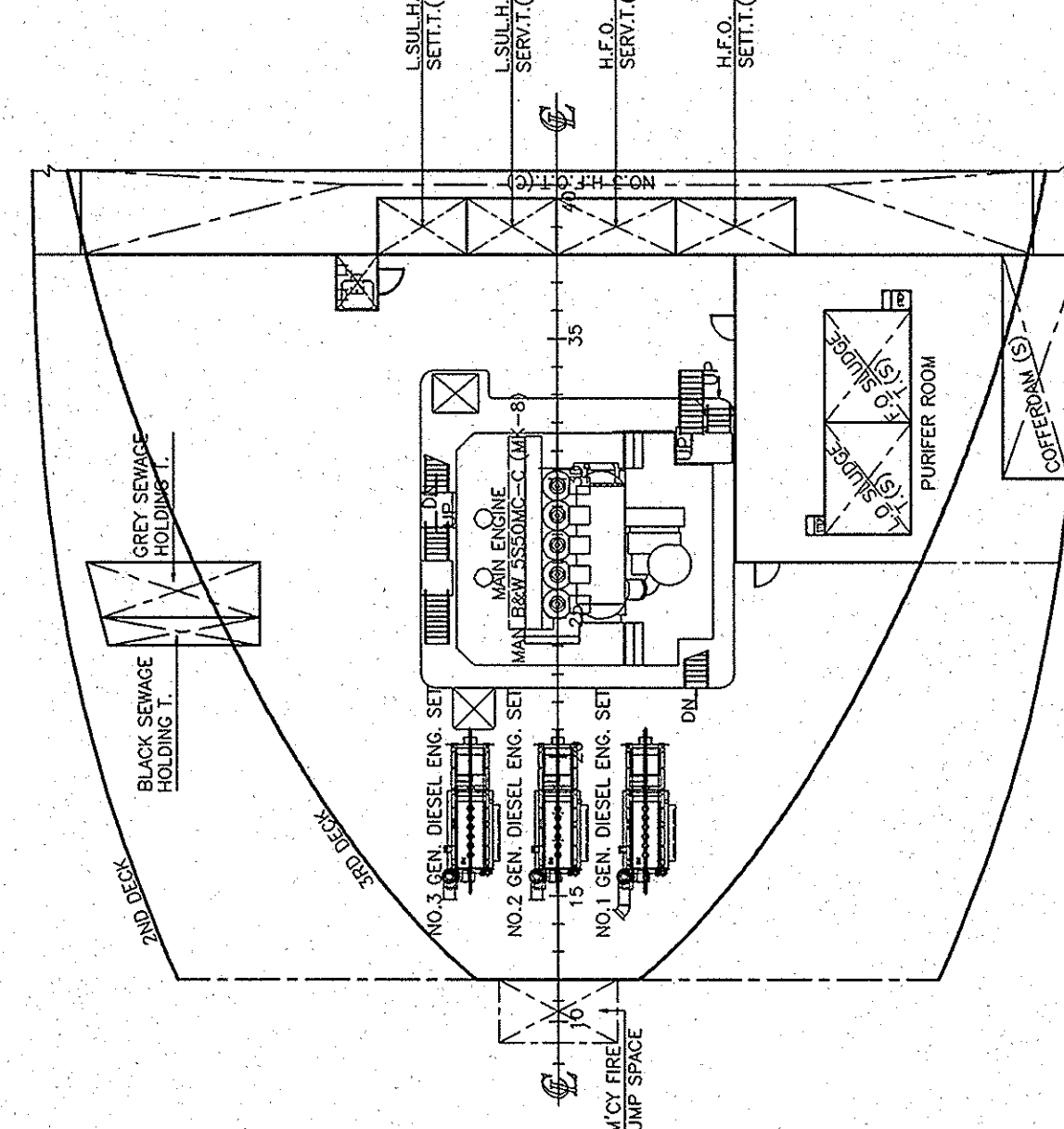
'A' DECK



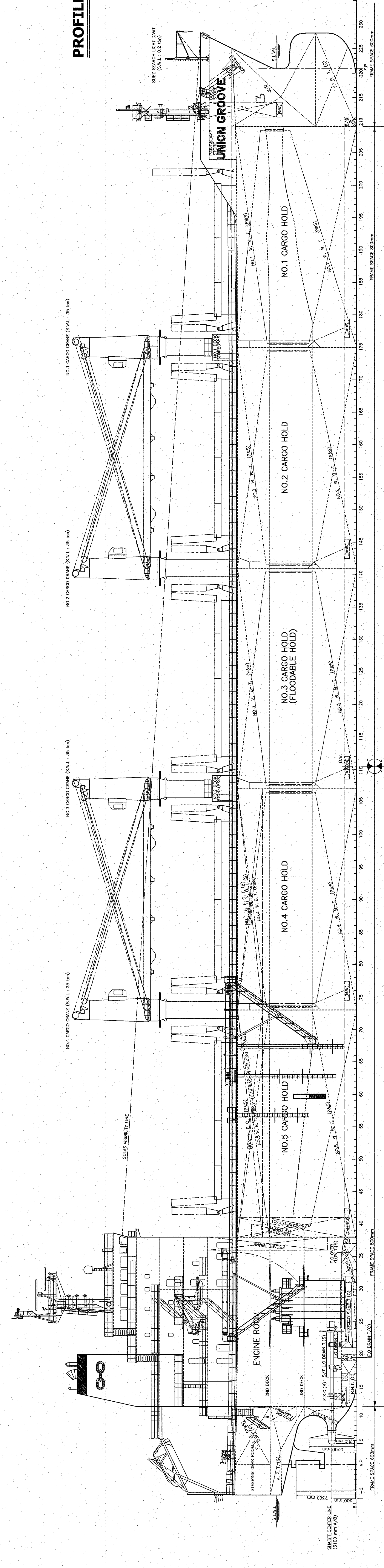
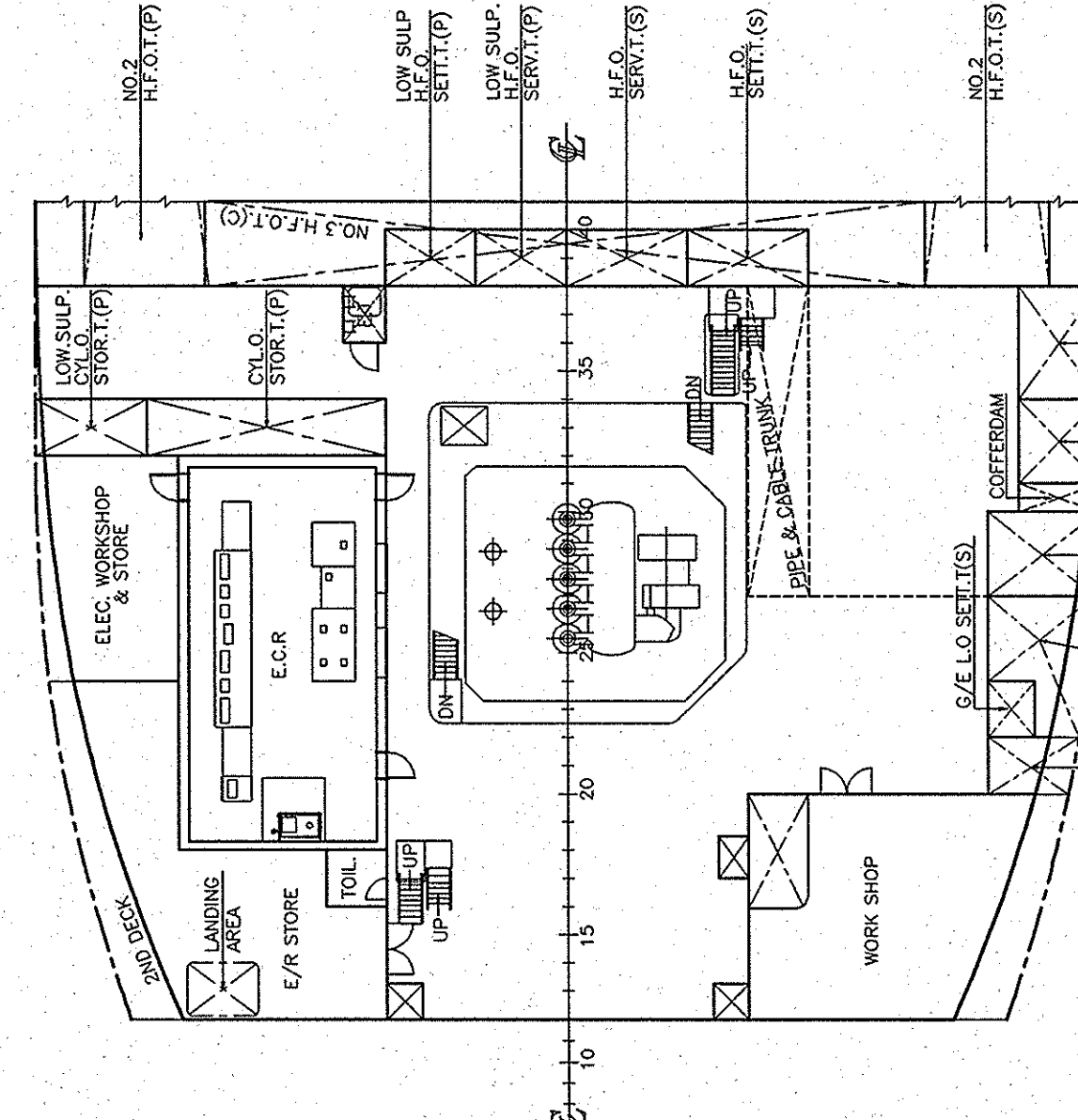
'B' DECK



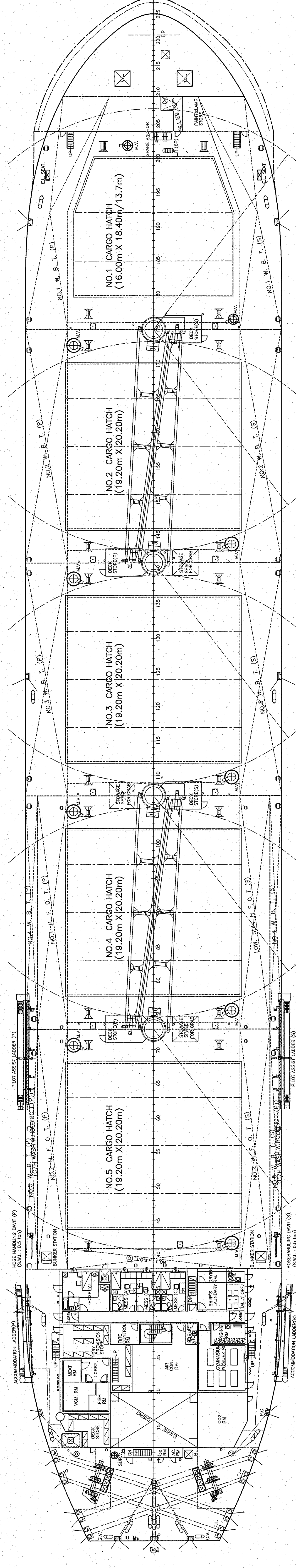
3RD DECK



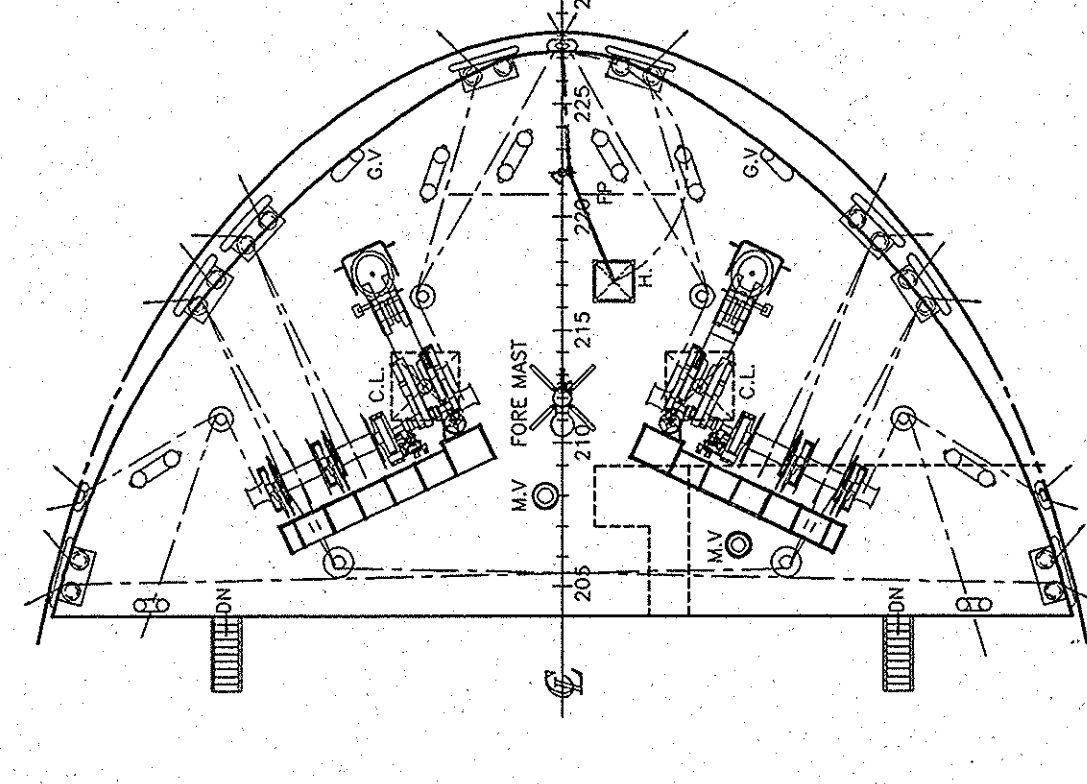
2ND DECK



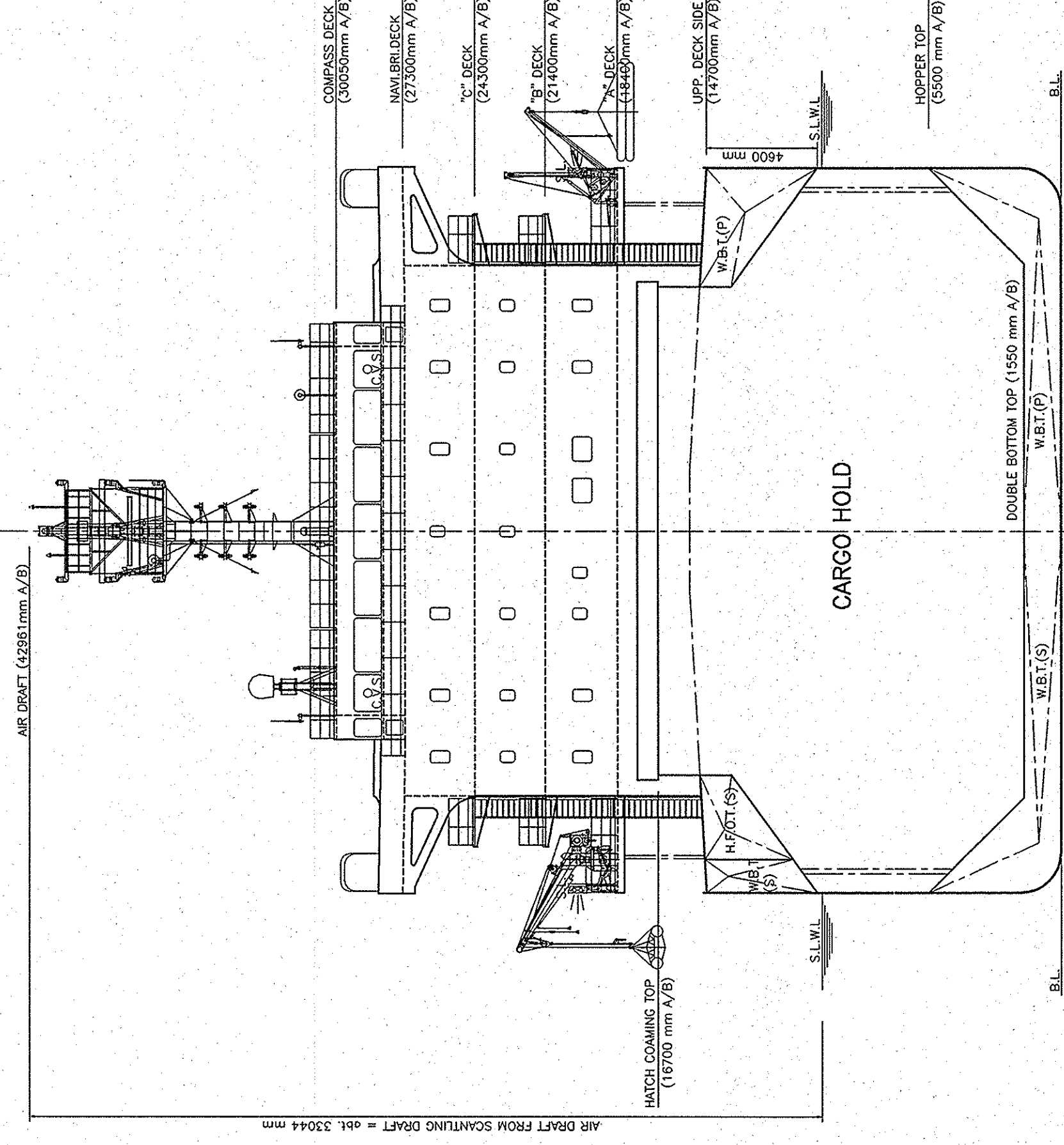
UPPER DECK



F'CLE DECK



MIDSHIP SECTION



PRINCIPAL PARTICULARS

LENGTH	D.A.	180.00m
LENGTH	B.P.	172.00m
LENGTH	M.O.	164.00m
DESIGN DRAFT	M.D.	9.00m
SUMMER DRAFT	EXT	9.8150m
DEADWEIGHT		35085.7 TON
NET TONNAGE		11500 TON
CRUISING RANGE	68% 20.000 ALM	24.5 TON/24 H
D.F.O. (MAN. TECHNICAL DATA BASE)		24.5 TON/24 H
MAIN ENGINE	(MCR) LIEBHERR 5550MC-2 (MCR: 110) A 1344	
	(MCR) LIEBHERR 5550MC-2 (MCR: 110) A 1344	
	(MCR) LIEBHERR 5550MC-2 (MCR: 110) A 1344	
SERVICE SPEED (AT MCR WITH 15% S.M)		14.08 Kts
(At SPANTLING DRAFT)		14.08 Kts
COMPLEMENT	25 P. + 6 SWEET CREW	

UNION GROOVE	BB - 01
HULL NO.	H-4060
SHIP TYPE	DWT 85,000 TON CLASS BULK CARRIER
APPROVED	<i>[Signature]</i>
CHECKED	<i>[Signature]</i>
SCALE	1:100
DATE	2012.01.03
CLASS	NYK
COUNTRY	UK
DESIGN NO.	DB100031DB
DESIGN DEPARTMENT	BASIC DESIGN DEPARTMENT
DESIGNER	SPP SHIPBUILDING CO., LTD.
GENERAL ARRANGEMENT	